

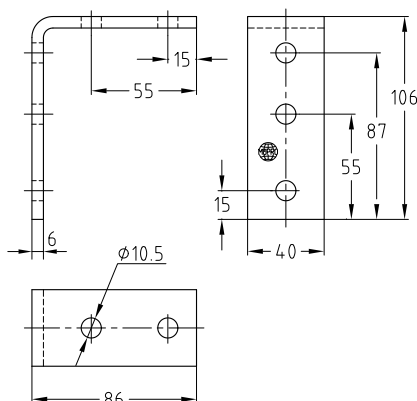
Mounting angles 90° galvanised

Field of application

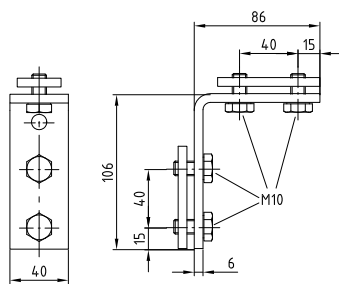
- Solid fixing element for construction of pre-wall installations and shelves as well as for channel constructions for attachments of pipelines and air ducts without welding
- Also applicable for direct mounting on walls, ceilings or floors

Advantages

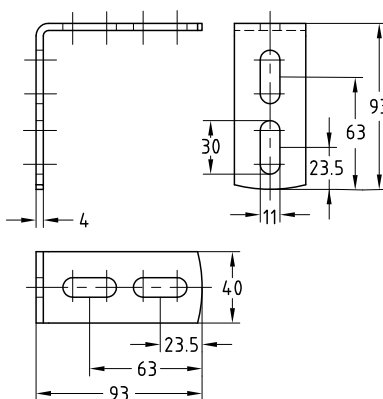
- Variable fitting possibilities
- Versatile in use, e.g. as:
 - Angular support bracket
 - Angular load-bearing bracket
 - Connection element
 - Angular bracket
- Multi-purpose component for professional, practical installation solutions
- Can be provided already pre-assembled with MPC-Double rail nut for the quick attachment within channel slot



MPC-Mounting angle 90°



MPC-Mounting angle 90°, pre-assembled



Mounting angle 90°, type 3, light

	For support channels	Suitable for	Part no.	Sales unit	Pack unit
MPC-Mounting angle 90°	38/24–40/120	MPC	118808	25	pieces
MPC-Mounting angle 90° pre-installed			147764		
Mounting angle 90° type 3, light	38/24–40/120, 41/21–41/124	MPC/MPR	118906		