

MPC-Lateral angles

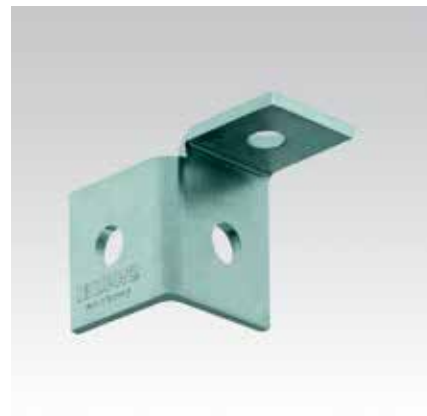
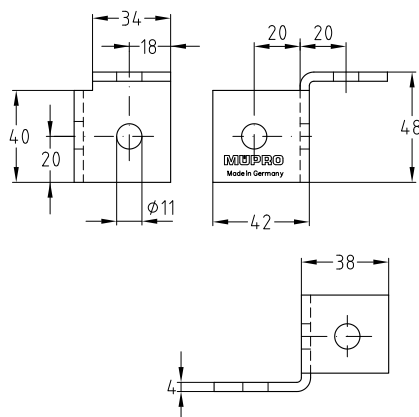
galvanised

Field of application

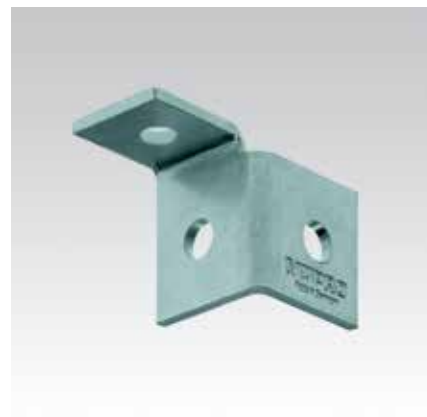
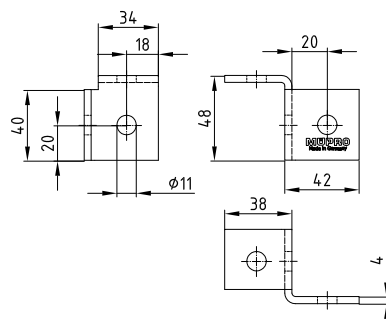
- Connecting elements for the construction of frames, shelves and wall-mounted installations using MPC-Support channels

Advantages

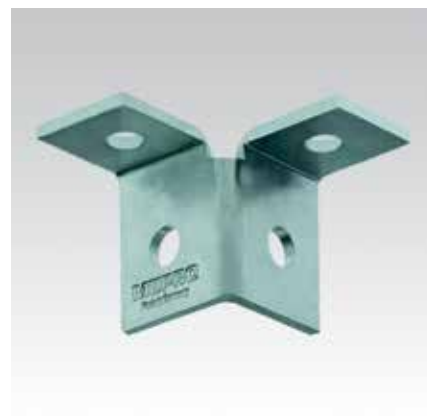
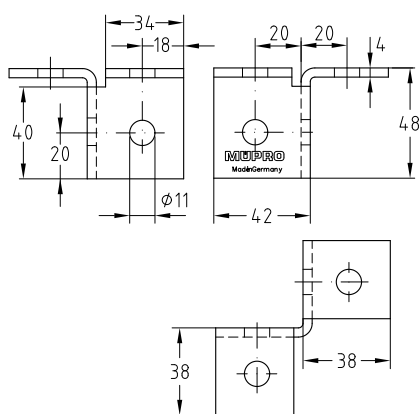
- Creation of solid connections without welding
- Various mounting options for stable joint and angle connections with MPC-Support channels
- Appropriate combination of elements allows junctions with up to four exit directions
- Great flexibility – a large variety of connections can be made with only a few components
- Quick and simple attachment in combination with MPC-Quick fastener for angle mounting



MPC-Lateral angle, right



MPC-Lateral angle, left



MPC-Lateral angle, double-sided

Features



Description	Angle [°]	For support channels	Part no.	Sales unit	Pack unit
Right	90	38/24-40/120	123068	25	pieces
Left			123060		
Double-sided			123048		

⚠ Stainless steel version available upon request.