

### MPC-Channel connectors galvanised

#### Field of application

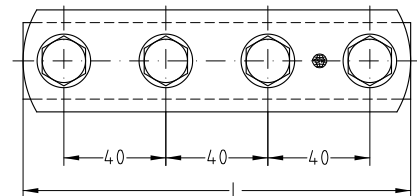
- Quick butt-joint connection for MPC-Support channels


#### Advantages

- Enables exact alignment of the channel
- Four bolts provide a frictional joint
- Smooth attachment by sliding into the channel section



For support channels	Part no.	Sales unit	Pack unit	Dimensions [mm]	
				L	b
27/18, 28/30	<b>120060</b>	50	pieces	148	25
38/24, 38/40, 39/52, 40/60, 40/80	<b>163109</b>	25		152	40



 Please refer to page 4/80 for the heavy-duty version of the channel connectors.

