

Toggle plugs galvanised

Field of application

- For attachment on drywalls and roofs

Advantages

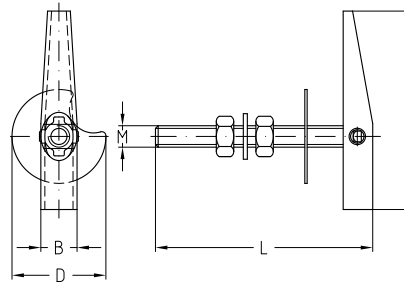
- Ideal for the attachment of supporting structures, e.g. MPC-Support channels, to partition walls, cavity walls, service shafts or trapezoidal metal sheeting
- Very good load distribution due to large supporting surface of the toggle
- Variable due to the adjustable thread length
- The M10/180 design gives very high load-bearing capacity, e.g. for the fixing of washbasins, wall-mounted toilets, boilers and all types of equipment



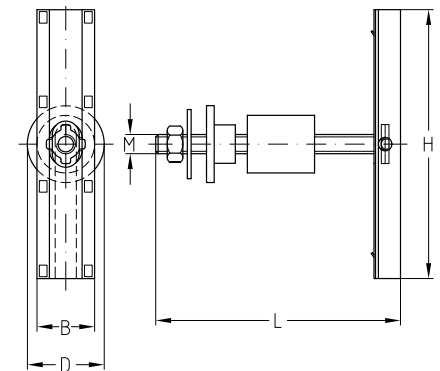
M6 to M8 version



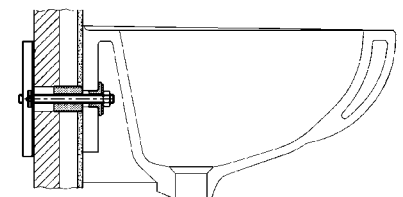
M10 version



M6 to M8 version



M10 version



Sink fixture using a M10 toggle

Size	Connecting thread	Part no.	Sales unit	Pack unit	Max. recommended load [N]	Dimensions [mm]			
						B	D	H	L
M6/100	M6	113112	100	pieces	500	14	30	70	100
M8/70	M8	113118			650	15	36	74	70
M8/100		113115							100
M10/180	M10	113109	50		1,700	30	38	140	180