

# R-FSC Drywall collated screws for metal

Drywall screw with fine thread for plasterboard fixing



## Approvals and Reports

PN-EN 14566 + A1: 2012

DoP-EN14566

Reaction to fire: A1

Flexural strength: pass

CE  
10

## Product information

### Features and benefits

- Top-quality material and dimensional accuracy of the collating strip for improved firmness and stability of screw feeding into the screwdriver ensuring minimised screw jamming or skipping risk
- Optimised screw tip geometry - excellent drilling capability
- No pre-drilling required
- Low-carbon steel with black phosphate finish for increased durability
- Bugle head with PH2 drive designed to finish flush with plasterboard

### Applications

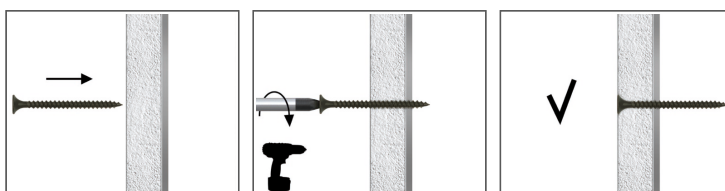
- Fastening plasterboard to metal framework

### Base materials

Approved for use in:

- Structural Steel

## Installation guide



1. Drive the screw straight until the head is flush
2. Screws with countersunk head allow flush connection



## Product information

Size	Product Code	Fixing		Fixture
		Diameter	Length	Max. thickness
		d	L	t <sub>fix</sub>
		[mm]	[mm]	[mm]
Ø3.5	R-FSC-3525	3.5	25	14
	R-FSC-3538	3.5	38	27
	R-FSC-3542	3.5	42	31
	R-FSC-3545	3.5	45	34

## Installation data

Size			Ø3.5
Substrate			Steel
Min. installation depth	h <sub>nom</sub>	[mm]	-
Min. substrate thickness	h <sub>min</sub>	[mm]	0.5
Min. spacing	s <sub>min</sub>	[mm]	30
Min. edge distance	c <sub>min</sub>	[mm]	30

## Basic performance data

Performance data for single screw without influence of edge distance and spacing

Size			Ø3.5
Substrate			Steel
Substrate thickness h <sub>min</sub>	[mm]		0.5
CHARACTERISTIC LOAD F <sub>RK</sub>			
FS F <sub>Rk</sub>	[kN]		0.57
DESIGN LOAD F <sub>RD</sub>			
FS F <sub>Rd</sub>	[kN]		0.29
RECOMMENDED LOAD F <sub>REC</sub>			
FS F <sub>rec</sub>	[kN]		0.21

## Product commercial data

Product Code	Fixing		Quantity [pcs]			Weight [kg]			Bar Codes
	Diameter [mm]	Length [mm]	Box	Outer	Pallet	Box	Outer	Pallet	
R-FSC-3525	3.5	25	1000	1000	180000	1.53	1.53	305.4	5906675486659
FSC-3538	3.5	38							
R-FSC-3542	3.5	42	1000	1000	180000	2.2	2.2	423.3	5391528691036
R-FSC-3545	3.5	45	1000	1000	180000	2.4	2.4	464.3	5391528691661